

A time of transformation calls for an expanding vision.
Experience the view from the top of the world.

Spirit Call



Embraced By the Crown of Pachamama

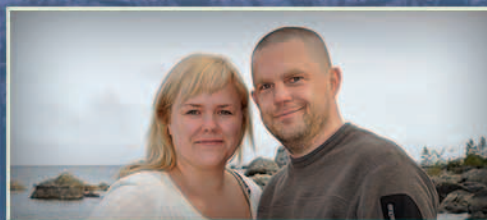
Northern Scandinavia is a land of wild indigenous souls, of hearty people called the Sami, and of vast open spaces where the Northern Lights express themselves in a celebration across the sky.

We go here in the dark to join the 400 year old Sami Market, to hear their stories, and to seek our own impressions of the energy, at the Rainbow Fountain of our Earth. We will call upon the Northern Lights, the reindeer and other guides to speak to us of their medicine.

This is a true journey through fire and ice, and into the depths of the stars. Join us in ceremony at the top of the world, as we offer our gifts, and invite the energy of this wild place to inform the whole of our experience.



Wake and Kinlen
Sacred Pathways



Helene and Thomas
EpicJourney

February 5-12,
2010

February 5
Meet in Kiruna, Sweden
Opening Fire and Sami
Storytelling

February 6
Arctic Circle Ceremony,
400 year old Sami Market,
Jokkmokk, Sweden
Music, arts, crafts, sealskin/
native dress, view shaman
drums, medicine

February 7
Last chance at Market, and off
to Kautokeino Sweden with
stories of trolls and Viking gods,
Intro to Nordic Runes, Northern
Lights vigil

February 8
Continue North crossing Finland
into Norway to the northern most
point of land, Fire Ceremony at
the Crown of Pachamama

February 9
Enter the Rainbow Fountain of
energy at Nordkapp, Norway,
overlooking the Arctic Ocean.
Peace Rose Ceremony, Kuichi
Karpi, time to soak in the energy

February 10
Karasjokk Museum in heart of
Sami culture. Ceremony in
traditional Lavu. Journey south,
Northern Lights tracking,
storytelling

February 11
Visit Ice Hotel in Jukkasjarvi,
Closing Fire and celebration

February 12
Departures from Kiruna airport,
no earlier than 11am

SACRED PATHWAYS



EPICJOURNEY
ASSISTING THE AWAKENING UNIVERSE

Cost is €1630 EURO (approximately \$2425 US)

For registration and information, please contact us by e-mail:
Kinlen: kinlen@sacredpathways.us / www.sacredpathways.us
Thomas: thomas@epicjourney.se / www.epicjourney.se

This is an invitation only event. Please let us know if you think we have missed anyone.